

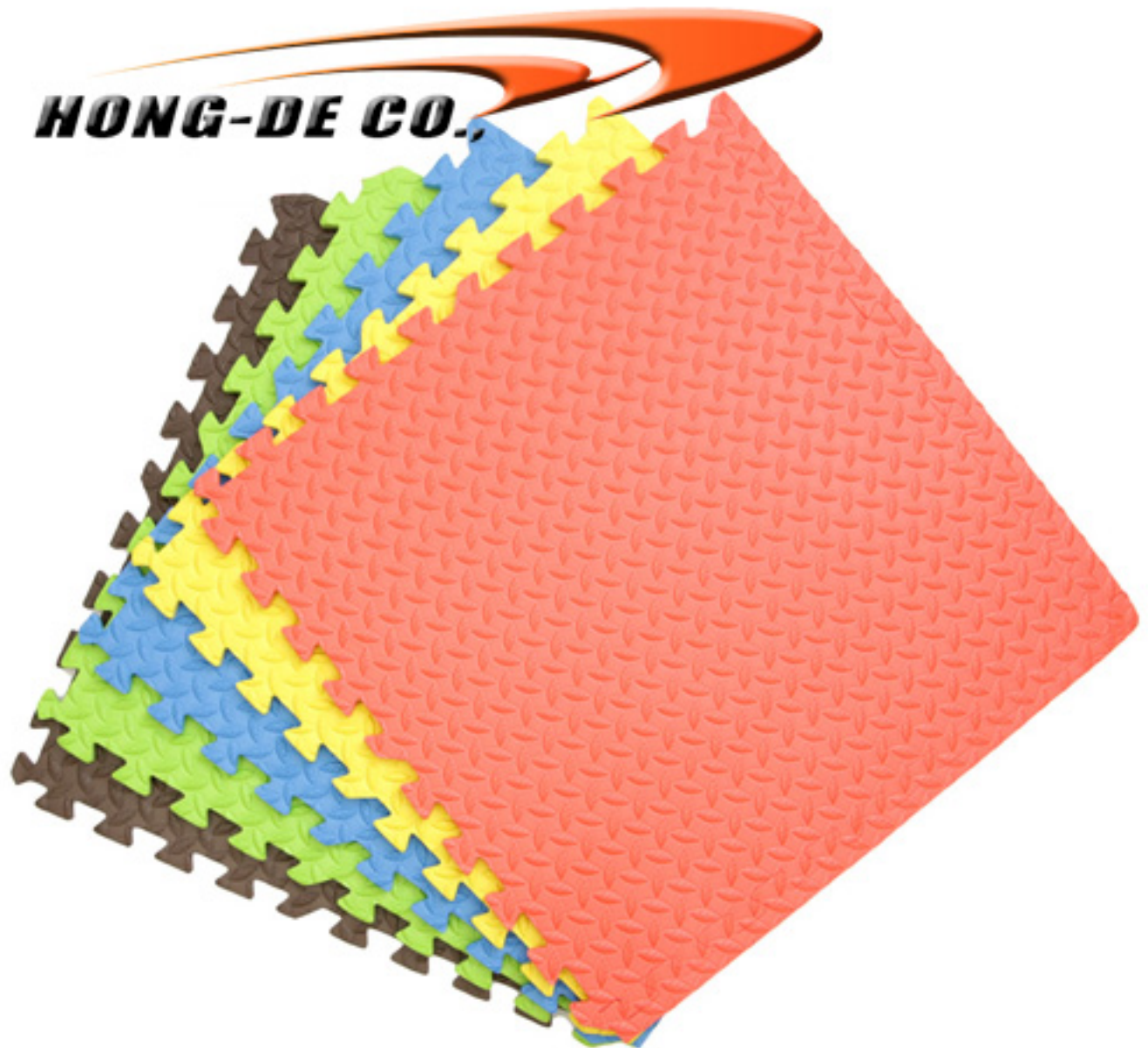
---

Anti-slip Multi-colour Foam Mat ,water-proof From <http://www.matfoam.com/>

MODEL:	
SIZE:	24"24" 1/2"
PACKAGE:	4pcs/set

**Anti-slip Non-toxic multi-colour EVA Foam mat**

- Use multiple sets to cover larger areas
- 100% EVA Foam
- Easy to pack away when not in use
- Safe, soft, durable and easy to wipe clean with soap and water



Dimension: 24"x24" .47"(12mm) (4-Pack)

Soft-Tiles.com Foam Flooring is the only multi-purpose foam flooring that has been tested and received an ASTM F 963 07 Child Safe rating. It is also the only foam mat that has a UL 94 HBF Fire Retardant Safety rating. Our Foam Flooring is also Non-toxic, Latex Free, Lead Free, Allergen Free, Phthalate Free and Odor Free.

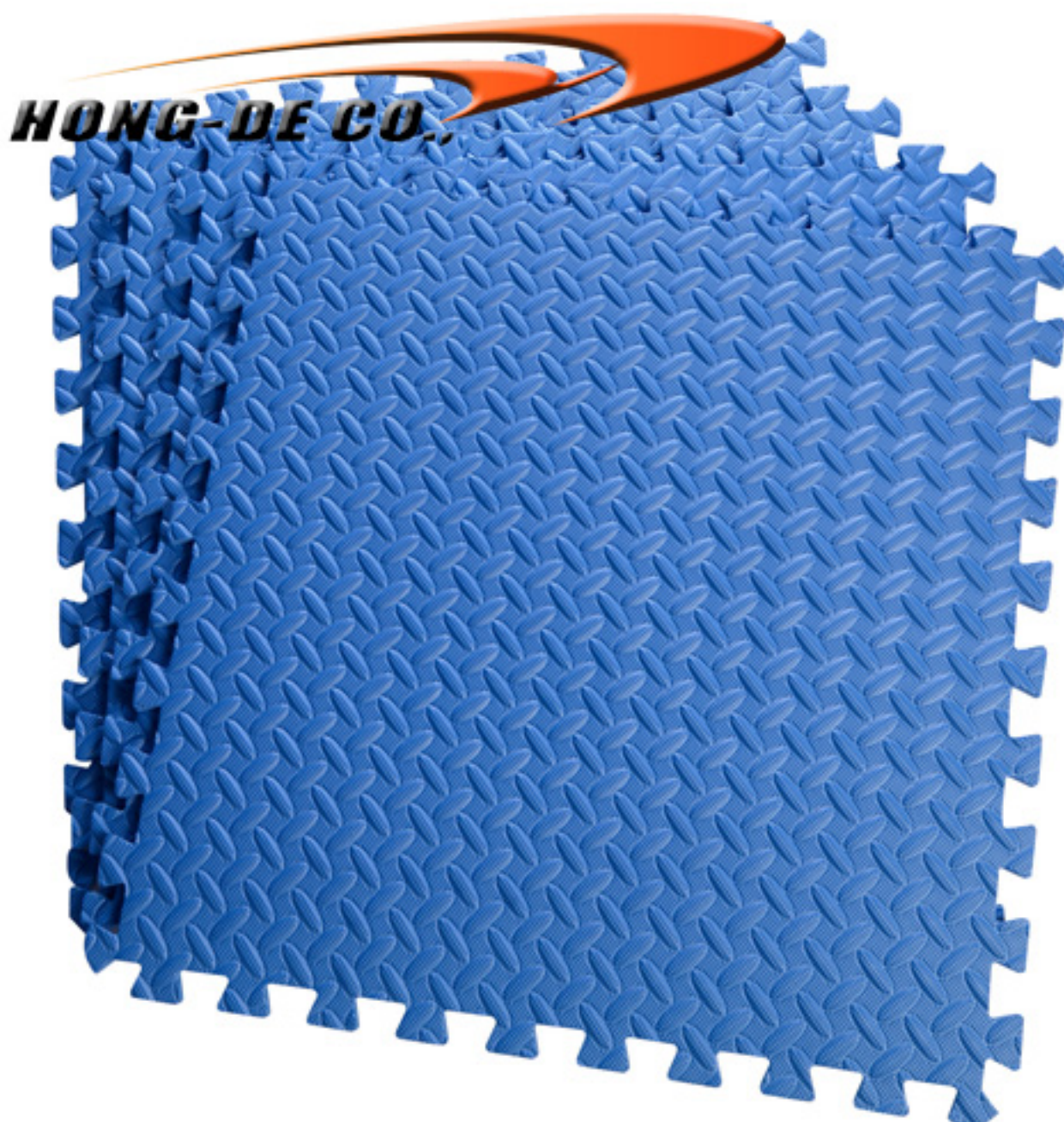
**HIGHLIGHTS**

Includes 2 edges per tile  
Each tile is 1/2" thick x 24"

---

Set includes 6 different colored tiles  
Mold and mildew resistant  
These tiles interlock with our regular Eco-Soft tiles  
Closed cell EVA

Using soft EVA foam floor mats provide a fun, cushioned surface for your little one. Made of interlocking foam pieces, the mats create a soft base for creative play, insulate your child from cold floors, and add a great contemporary look to any room.



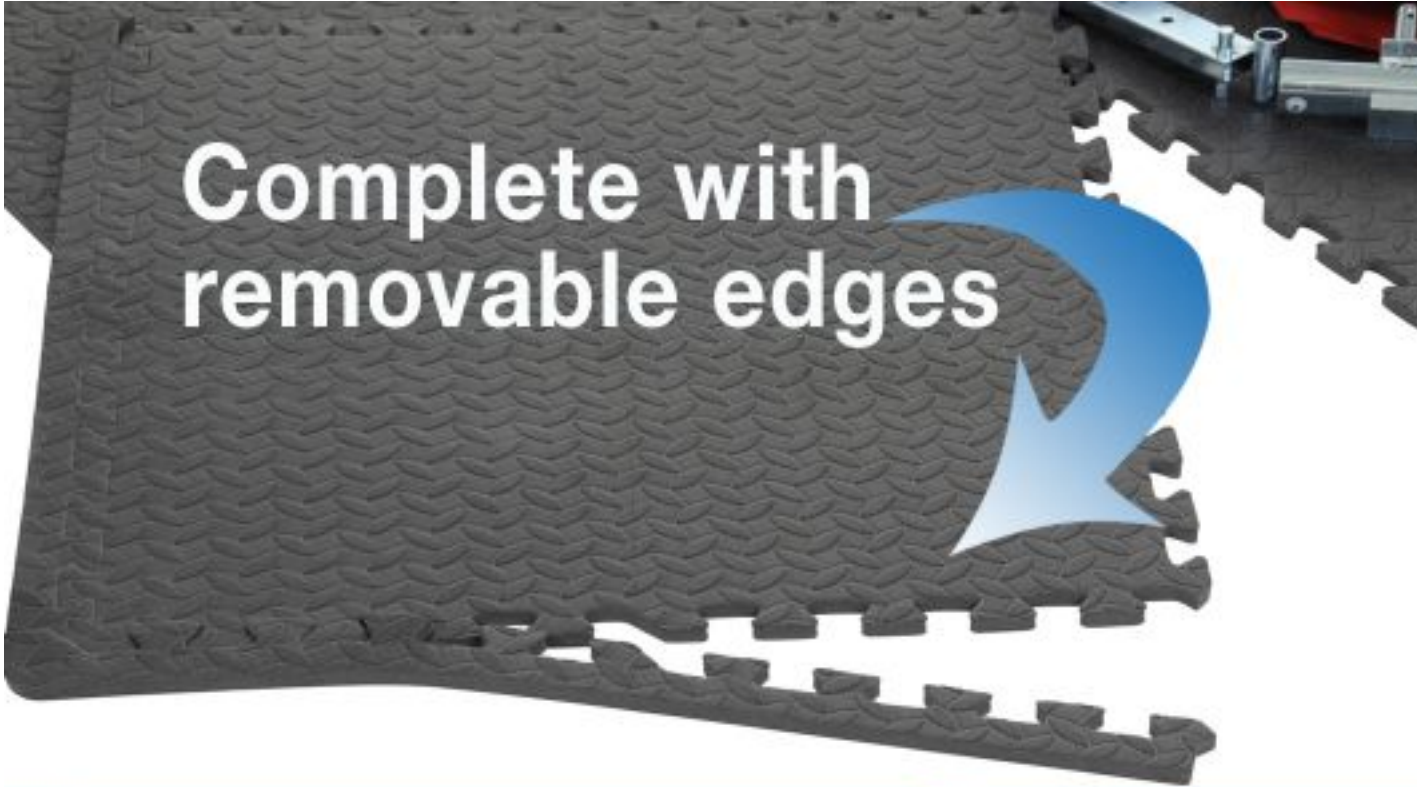
APPLICATIONS

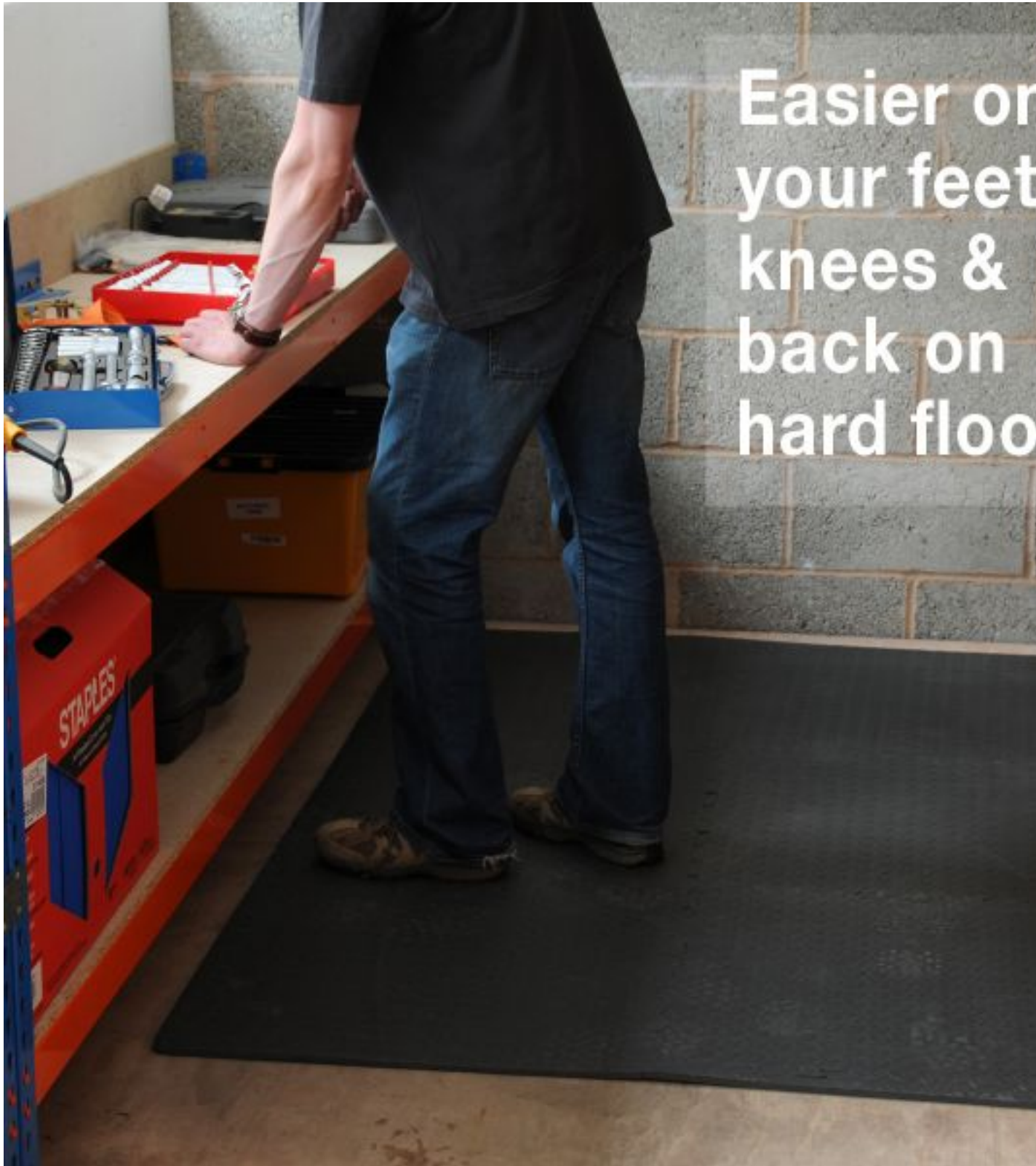
FEATURES

PROPERTIES

Pre-schools	Environmentally Friendly - Made from Recycled Materials	Child Safe
Day Care Centers	Reversible - patented design allows use of both sides for  aesthetic checkerboard design or for replacing damaged  tile surfaces	(ASTM F 963-07)
Churches	Child Safe	Fire retardant
Basements	Non Toxic - Lead Free/Latex Free	(UL 94 Test Rating HBF)
Exercise Rooms	Closed Cell High Density foam helps resist moisture	Moisture Resistant
and Home Gyms	Flexible and Extremely Durable	Odorless
Kid's Play Areas	Shock Absorbent	Anti-slip
Laundry Rooms	Acoustic and Thermal Insulation properties	Anti-Fatigue
Garages and Workshops	Protects surfaces from damage	
Camping/Recreation	Easy to Clean - use mild soap and water. Test your  vacuum prior to using and adjust to its highest setting  and Do Not use the power brush feature.	
Construction Traffic	Portable - easy to assemble and disassemble to transport.	
Anti-fatigue Areas	Floating floor - no adhesives needed or recommended	
Trade Shows	Anti-slip textured surface	

**Used Environmental:**





Easier on  
your feet  
knees &  
back on  
hard floor



Factory environment



Factory environment



Factory environment



Factory environment



Factory environment



Factory environment



Factory environment



Factory environment



Factory environment

[soft-tiles.com](http://soft-tiles.com)

[hongdeind.com](http://hongdeind.com)

Lab & Research:

Workshop & Production Line:



Loading Container:



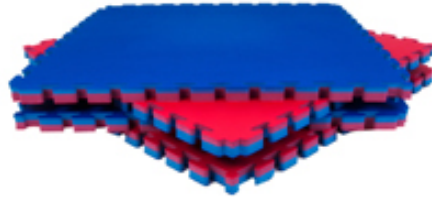
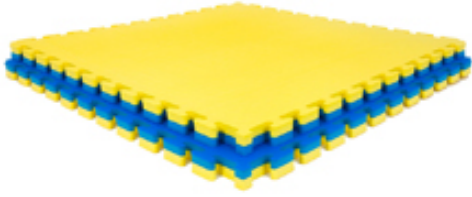
Europe & USA Certificate , Standard:



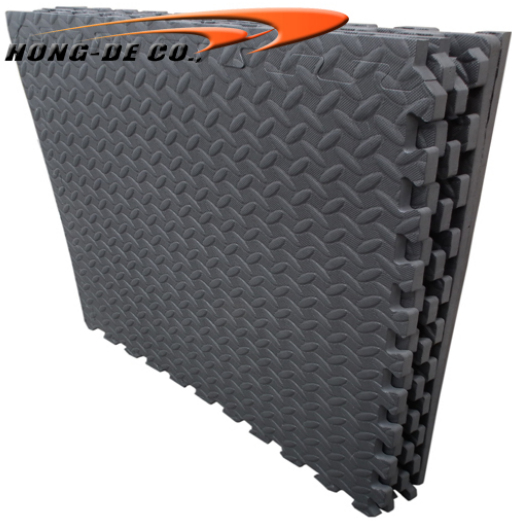


---

**High Density Gym Sport Floor Mat:**



**Black Foam floor anti-slip, water-prrof:**



---

**HONG-DE CO.,**

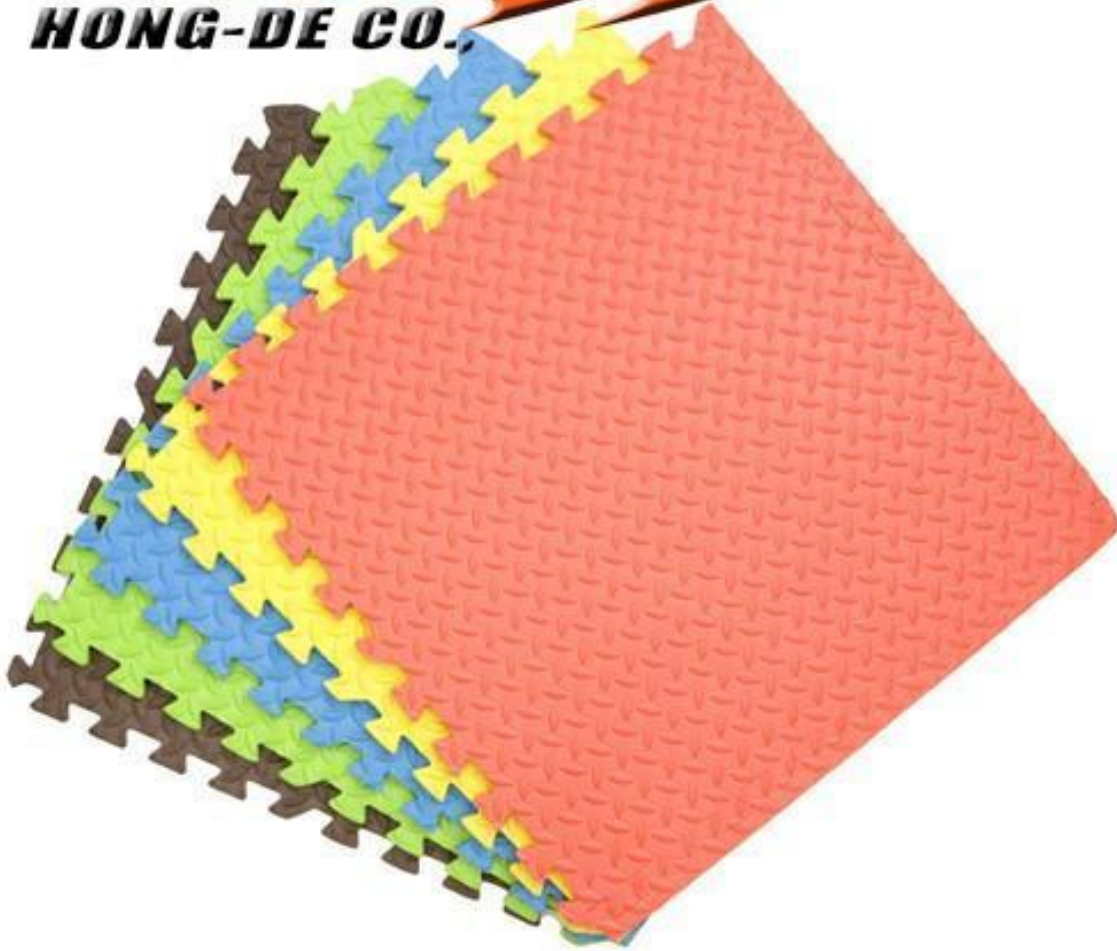


[Soft-Tiles.com](http://Soft-Tiles.com)

[Soft-Tiles.com](http://Soft-Tiles.com)

---

**HONG-DE CO.,**



[Soft-Tiles.com](http://Soft-Tiles.com)

[Soft-Tiles.co](http://Soft-Tiles.co)